

Grace Connections

Lutheran Church
Champaign, Illinois

The Opportunity of Lent

In my February article I wrote about the discipline of Lent — the traditional practices of self-examination and repentance, prayer and fasting, sacrificial giving and works of love. This month I want to say something about what makes those practices possible, and even inviting rather than burdensome. The key is in how we think about what Lent is for in the first place.



On Ash Wednesday I preached on the Gospel reading from Matthew 6, and I started by pointing out what looks like a thicket of contradictions. Joel says blow the trumpet and gather the assembly — which is exactly what we did. But Jesus says don't blow a trumpet to advertise your piety. Two Sundays before Ash Wednesday he told us to let our good works shine before others; a chapter later he says don't let your left hand know what your right hand is doing. And here we are, walking out of church with ash crosses on our foreheads. The contradictions dissolve, though, once you notice that Jesus is talking about intent throughout. He is not forbidding public prayer or visible acts of mercy. He is warning against the kind of performance that is really self-promotion — doing religious things in order to be seen, praised, and thought well of. That, Jesus says, belongs to the values of this world rather than the kingdom of God.

The deeper point is this: all of those apparent contradictions arose from a particular assumption about Lent — that it is something we are supposed to do and perform and get through. When we approach it that way, the practices become a kind of spiritual résumé, showcasing *our* achievements. But as I reminded us, Lent is not primarily something we do; it is an opportunity to be opened to what God is doing in Jesus for us and for the world God loves. Those Lenten practices are not a set of achievements to display but postures of receptivity — ways of turning toward God without fear, without pretense, and with open hands. Our identity as God's beloved children, given to us in baptism, is secure. And that security is what makes genuine repentance possible.

So, the opportunity this Lent is not to perform better but to receive more fully — to let God's word and sacraments do their work. We follow Jesus to the cross trusting that what happens there is for us, and not only for us. And in doing so we find that the journey itself has been turning our hearts toward God and the world God loves all along. That, dear sisters and brothers in Christ, is how true repentance happens.

+ Pastor Repp

IN THIS ISSUE

- 2-5 -

God Connections

Faith, Worship,
Music, Study, Prayer

- 6-9 -

Community Connections

Fellowship, Fun, Congregation
News, Intercessory Prayer

- 10-11 -

World Connections

Service, Advocacy,
Ecumenism, Learning

- 12 -

**March Worship Support
Schedule, Pastor's Discretionary
Fund, Building Use Information,
Webpage and Zoom Links**

- 13 -

March Calendar

GRACE LUTHERAN
CHURCH

313 S Prospect Ave
Champaign, IL 61820
(217) 356 6232

www.glccu.org

Like us on Facebook
and Instagram!

Subscribe to our YouTube
Channel



God Connections

Faith, Worship, Music, Study, Prayer

March Faith Circle

Faith Circle meets on the third Tuesday evening of each month at 7 pm in the narthex. All are welcome. We begin the evening with refreshments (coffee and snacks provided by the hostess) and fellowship. The lesson leader presents the Bible study, beginning around approximately **7:30 pm**.

This month's Faith Circle is on **Tuesday, March 17th**. It is being hosted by Kathy Bowersox, with Janet Lepp serving as the lesson leader. We collect an offering each month, which will support the ministries of WELCA (Women of the ELCA) as well as selected local and ELCA charities. We use the Bible study materials from *Gather Magazine*, a WELCA publication. **Plan to attend and bring a friend!**

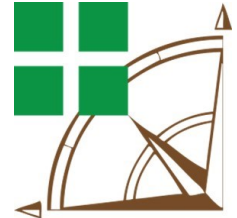
First Friday Synod Prayer Group

Where and how is the Spirit moving? One way to find out is to gather together regularly for what Luther calls "The Mutual Conversation and Consolation of the Saints." **You are invited into a time of prayer on Zoom from 7:30 to 8:00 a.m. on the first Friday of every month.**

We will share what the Holy Spirit has laid on our hearts and then lift up those concerns and hopes to God in prayer. This spiritual practice allows us to see Christ and be Christ for one another as the Holy Spirit builds up our communities of faith across the Central Southern Illinois Synod. Come join us as we share our hopes and concerns with God and one another for the sake of our shared life together. You can sign up for the *First Friday Synod Prayer Group* here: <https://www.csis-elca.org/event/first-friday-prayer-group/>

On The Way

On The Way resumed this Lent on **Thursday evenings**. It began on **February 26**, and is meeting through **March 26**.

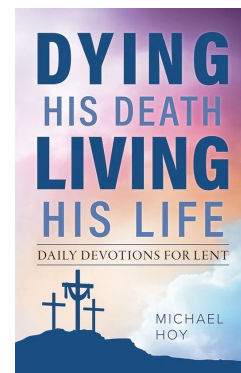


ON THE WAY

On The Way is a faith-formation opportunity at Grace that connects new and prospective members with established members of our faith community. If you're reading this, you're a candidate for participating in *On The Way*!

Each 90-minute session begins with conversation on a topic of faith, continues with group reflection on a biblical text, and closes with communal prayer.

We'll meet for *On The Way* in the chapel, from **7:00-8:30 p.m.** On the second and fourth Thursdays of the month that timing overlaps with Game Night, but this is only temporary.



Free Lenten Devotionals in the Narthex

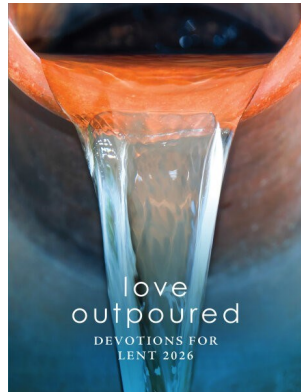
Please choose a Devotional for Lent that suits you and/or your Family. They can be found in the narthex, and are free as a gift from Grace Lutheran. Past materials and new selections are available to choose from. **May you have a blessed Lent.**

God Connections

Faith, Worship, Music, Study, Prayer

Grace Book Club for Lent

Love Outpoured:
Devotions for
Lent 2026



published by
Augsburg-Fortress Press

We have chosen this devotional booklet, focused on the apostle Paul's letter to the Romans, for the Grace Book Club to read during Lent.

In words that continue to speak to us today, Paul lays out foundational beliefs for a life of faith in Christian community. Daily entries begin with evocative images and brief scripture texts. The writers then bring diverse voices and pastoral wisdom to the texts with quotations to ponder, reflections, and prayers.

Please note the following changes in time and place! The Book Club will meet on Sunday March 29 at 11 AM (during the Adult Sunday School hour) in the Chapel of Grace Lutheran Church.

You may contact one of us to obtain your free copy of the booklet. Moreover, thanks to the generosity of Thrivent, we have extra booklets to share with others in the congregation, and everybody is invited to join this discussion. May God's love be poured out to us and through us to our neighbors, churches, communities, and all creation!

~Janet Lepp and Eileen Herrstrom



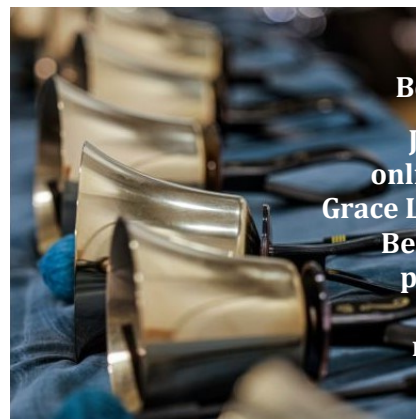
Adult Sunday School: Reformation Roots

Sunday School returns to the Reformation Roots study that we began last year. This study gives us an overview of Reformation history and shows how it is still relevant to the life of the church today. Join us on the first three Sundays in **March (March 1, 8, and 15)** in the Hoffmeister Room at **11:00am**.



Please join us
for our next
**Guitar Service on
March 1 - in person
or online on
Facebook,
YouTube, or at
glccu.org**

**Worship begins
at 9:30am**



**March 8 -
Bell Choir Service**

Join in person or
online and hear the
Grace Lutheran Church
Bell Choir perform
pieces during the
regular Sunday
morning Service
at 9:30am

God Connections

Faith, Worship, Music, Study, Prayer



You are invited to be part of a Welcoming Team during Lent!

St. Andrew's Campus Center is now in their new building and has begun to carry out ministry in a brand new space. We offer them our congratulations!

Sunday evening meals:

To help welcome them into their new space, the **Social Ministry Committee of Grace Lutheran** has made a commitment this Lent to provide food for the St. Andrew's Sunday evening fellowship meals.

A team leader from Grace will organize each meal and will be looking for others to assist. There will be a variety of needs each week of both supplies and volunteer helpers.

Please look for the sign-up chart in the narthex at Grace Lutheran Church.

Also note, members of Grace are invited to join them for these fellowship meals which begin at 5:45 and then to attend worship with them at 7:00.

Lenten Soup Suppers

As has been our tradition at Grace, the Parish Life Committee will host "Lenten Soup Suppers" beginning at 6:00pm in the narthex on **February 25 and running through the month of March (March 4, 11, 18 and 25).**

As in past years, we plan to offer crock pot soups and bread. There will be a sign-up sheet in the narthex. In recent years, two soup choices weekly have been adequate. Please consider helping by providing soup or bread, or by helping to set up or clean up on a date that works with your schedule.



Midweek Lenten Services

Lenten Evening Prayer takes place on Wednesdays during Lent at 7:00 p.m. from February 25 through March 25. We will again use "Behold, Your Light Has Come" as our setting for the service this year.



God Connections

Faith, Worship, Music, Study, Prayer

Holy Week Schedule March 29 - April 5

As our Midweek and regular Lenten services finish up, please join us for our Holy Week Services listed below:



PALM SUNDAY

March 29, 9:30 a.m.

Procession with Palms and Holy Communion



MAUNDY THURSDAY

April 2, 7:00 p.m.

Service of Absolution and Holy Communion



GOOD FRIDAY

April 3, 7:00 p.m.

Tenebrae: Service of Gradual Darkness



HOLY SATURDAY

April 4, 7:00 p.m.

Easter Vigil: Service of Readings, Remembrance of Baptism, and Holy Communion



EASTER SUNDAY

April 5, 9:30 a.m.

Celebration of Jesus' Resurrection; Coffee Hour Plus Following the Service

Easter Sunday Service & Coffee Hour Plus

On **Easter Day, April 5**, service with **Holy Communion** will be held at the regular time of **9:30 a.m.** Easter Sunday **"Coffee Hour Plus"** will be held in the Narthex immediately following worship. Everyone is invited to enjoy a time of celebration and fellowship together. Coffee, juice, fresh fruit, and pastries will be served.

Easter Lilies, Hydrangeas and Donations

Purchase Easter Lilies and Hydrangeas or make a financial donation to Help Beautify the Chancel at Grace Lutheran for Easter Sunday

.....

You may sign up before and after the Sunday service on the following two Sundays:

March 8.....and March 15

Purchase an Easter Lily or a Hydrangea or make a donation of \$20 or more for Easter with a dedication of your choice.....(in honor of, in memory of, or in celebration of a loved one). After the Easter service, you may take your plant home or you may leave it at Grace for another Sunday for use in the chancel.

General donations are also gladly accepted. Thank you.

Prices:

Easter Lily - \$15.....Hydrangea - \$35

If you have questions, please contact Gloria Rainer (or contact the Grace Lutheran office to be put in touch with Gloria).

Community Connections

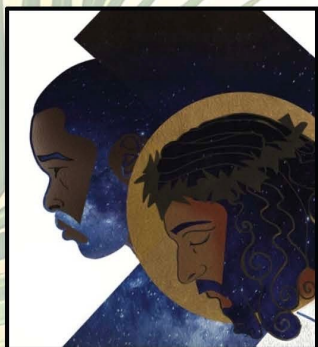
Fellowship, Fun, Congregation News, Intercessory Prayer

The choirs of Emmanuel Memorial and Grace Lutheran present

Music for the Passion

Stabat Mater

Giovanni Pergolesi



Simon Bore the Cross

Margaret Bonds

featured soloists

Dr. Ollie Watts Davis, soprano

Dr. Scott MacLeod, baritone

Erica Ancell, soprano

Thereza Lituma, mezzo-soprano

musicians

Wei-Ting Chen & Anna Wallace, violin

Jace Kim, viola

Maxwell Schultz, cello

William A. Murphy, organ

Nick Pierle, conductor

March 29, 2026

3:00 p.m.

Emmanuel Memorial Episcopal Church

102 N. State Street

Champaign, IL 61820

This concert is sponsored by the
Melissa M. Noel Memorial Concert Series at Emmanuel Memorial

GOD'S GIFTS; OUR HANDS

Meals on Wheels Help Needed for March 23rd - March 27th! Volunteers are needed for the week of Monday, March 23rd through Friday, March 27th. Two people are needed for each of the days from 10:30 am to 12:30 am., one can sign-up as a driver and the other as a runner. Sign-up with a friend or family member and enjoy your time connecting with others. This is a great way to reach out to others in our community. The sign-up sheet will be on the table in the narthex.

Thank you for your help and support of this ministry. **Leanne Wichus, Social Ministry**

Community Connections

Fellowship, Fun, Congregation News, Intercessory Prayer



LET'S DO BRUNCH!

MAIZE AT THE STATION Sunday March 22, 11:30am

The Parish Life Committee invites you to participate in this fellowship event and enjoy a meal together. March has 5 Sundays, but the fifth Sunday (Palm Sunday) is already very busy! As an alternative, let us gather for brunch on the previous Sunday, March 22.

Be watching for a sign-up list in the narthex and be sure to sign up no later than March 15.

Maize at the Station is a very popular venue with a great menu! Join us!

Questions? Contact Kathy Bowersox.

Game Night at Grace

Every **2nd & 4th Thursday of the month**, a group meets for Games in the Narthex at Grace Lutheran Church **from 6:00-8:00pm**. The group gathers to enjoy each other's company and engage in card and board games. **The dates for this month are March 12th & 26th.**

If you are interested in attending, please let Jim Fleming know. *Come and join us, and feel free to bring along your favorite game!*



DATE CHANGE *Dedication* of *St. Andrew's Lutheran* *Campus Center* now on Sunday, March 1, 2026

You're invited to a potluck dinner and a service of dedication and blessing on Sunday, March 1, 2026, as St. Andrew's celebrates its new campus ministry space at 909 South Wright Street, Champaign. Please bring a side or dessert to share and join us for dinner at 5:45 p.m. followed by worship at 7:00 p.m. with Bishop Greg Busboom preaching. Tours of the building will be offered starting at 5:00 p.m. as folks arrive.

Please arrive early to find parking next door at the University YMCA or along the nearby streets. If you need accessible parking, a limited number of spots are available in the parking garage.

Please contact:

office@lutherancampuscenter.org

with any questions.

Church Women United World Day of Prayer

Join the local Church Women United group on **Friday, March 6, 2026 at Grace Lutheran Church, Champaign** to celebrate the *World Day of Prayer*. Fellowship and refreshments at 9:30am and a program at 10:00am. Offerings will be taken for the World Day of Prayer National Office and for the local Canteen Run Program. All are welcome!

Community Connections

Fellowship, Fun, Congregation News, Intercessory Prayer

"Go. Together!" Synod Relation Trip April 18 in Champaign-Urbana

Join this one-day, synod-wide relation trip to the Champaign-Urbana area, where we will serve neighbors in need and build relationships across our communities of disciples. Projects include work at Sola Gratia Farm, a bike rodeo with St. Matthew's Lutheran, Urbana, work at a clothing distribution center, painting and building projects at St. Andrew's Campus Center, projects with LSSI, and more. You pick your projects when you register!

All projects are within a 5-mile/15-minute drive of Good Shepherd.

Registration is open at CSIS-ELCA.org/gotogether. Please register before March 20. [See the flyer](#) for more information and project choices, and share it with your community of disciples!

REGISTER HERE

Date: Saturday, April 18, 9:00 a.m.-4:30 p.m.

Location: Good Shepherd Lutheran Church, 2101 South Prospect Avenue, Champaign, is our host congregation. All projects are within a five-mile/15-minute drive of Good Shepherd.

Cost: \$10 / person helps us plan and provide snacks and water

- Many projects are accessible and open to folks of all ages.
- Everyone can participate in up to two different projects.
- Lunch is on your own. Suggestions will be offered, but the C-U area is full of options.
- Refreshments will be available both beginning and end of the day.

This event organized by the C/SIS New and Renewing Congregations team.

Summary of the February 1, 2026 Semi- Annual Congregational Meeting Actions

A. Resolution to appoint Debbie Peterson as ad-interim Treasurer – approved by voice vote

Whereas the Treasurer's office is vacant; and **Whereas** Article 2, Section 5 of the bylaws states that "Vacancies concerning ad interim on the Congregation Council shall be filled by the Council";

Resolved that the Council elect Debbie Peterson as ad-interim Treasurer, a legal member of the Council with full voting rights, beginning 14 October 2025, that Debbie's election by the Council be confirmed by the Congregation at its next meeting or not later than the Congregation meeting currently scheduled for 25 January 2026, and that her ad-interim term of office expire on 1 June 2026 or unless the Congregation elects a new Treasurer prior to this date.

B. Synod Delegates – with no additional nominations from the floor, the motion passed by voice vote

Be it Resolved, that the following be elected as 2026 Synod Assembly Voting Members and Alternates:

Voting Members: Debbie Peterson and Kevin Vail

Alternates: Eileen Herrstrom and Dan Lepp

C. 2026 Budget – the motion passed by voice vote, with one "no" vote on Zoom

Be it Resolved, that the congregation of Grace Evangelical Lutheran Church approve the budget for 2026.

Community Connections

Fellowship, Fun, Congregation News, Intercessory Prayer

Treasurer's Report

JANUARY 2026 Monthly Report	CURRENT MONTH	YEAR-TO-DATE
INCOME	\$ 8,614.88	\$ 8,614.88
EXPENSES	\$ 21,313.94	\$ 21,313.94
NET	\$ (-12,699.06)	\$ (-12,699.06)

JANUARY Income was much lower than expected. (Monthly budgeted \$20,833.33)

JANUARY Expenses were also less than expected. (Monthly budgeted \$27,200.25)

JANUARY NET deficit is \$ (-12,699.06)
Year to date actual deficit is \$ (-12,699.06)

Respectfully Submitted,

Debbie Peterson
Treasurer



Food Pantry Updates

The Grace Food Pantry has been busy!
In **February** the pantry reached:

- **Feb 5:** 92 households, 374 individuals
- **Feb 12:** 90 households, 334 individuals
- **Feb 19:** 82 households, 348 individuals
- **Feb 26:** 72 households, 309 individuals

That's 336 total families and 1365 people in our community that have been served by this ministry during the month of February.

To support the work that the Food Pantry does, you can donate online at <https://glccu.org/donate/>.

• Using GLC Facilities

Our facilities are available for use by members and by outside groups. To use the space, please fill out a facilities use request form on the website ([click the link to the form here](#)) and email it to office@glccu.org. Once the request is approved, it will be added to the calendar, and you can make arrangements to pick up a key if necessary. For more information please visit the website at <https://glccu.org/facility-use/> or call (217) 356-6232.

• Online Resources

Please see your email for the list of webpages and how to access them.

• Grace Meeting Zoom Link

Please see your email for the Grace Meeting Zoom link.

World Connections

Service, Advocacy, Ecumenism, Learning



NEW!

THE EAST CENTRAL ILLINOIS COALITION OF LABOR UNION WOMEN

HYGIENE PANTRY OF CHAMPAIGN COUNTY

**Grand Opening
Thursday, March 5, 2026
5:00-7:00pm**

**At the Brookens Center,
1776 E Washington Street,
Urbana, IL—Room 200**

**Enter through the door on
the right from the parking lot.**

Regular Hours:

Thursdays: 5:00pm-7:00pm
Saturdays: 10:00am-12:00pm
Contact: (217) 621-1436

Monetary donations can be sent to:
CLU-W Hygiene Pantry
P.O. Box 101, Savoy, IL 61849

Nominate Young Musicians for Lutheran Summer Music

Now is the time to nominate students for LSM 2026. Enrollment for next summer is filling quickly, and we expect most remaining spots to be filled by the **March 1 standard enrollment deadline**. At LSM, students connect advanced musical study with worship and the joy of Lutheran church music traditions. We welcome musicians on all instruments — brass, woodwinds, strings, percussion, piano, organ, voice, and harp — to study with nationally recognized faculty in a welcoming and supportive community.

LSM 2026 takes place at St. Olaf College from June 21–July 19, 2026. Know a young musician (grades 8–12) who would thrive at LSM? Nominate them today at LSMacademy.org/nominate. Questions or for more info please contact admissions@lutheransummermusic.org.



God's Love Made Real

God's Love Made Real is shorthand for the ELCA's vision statement and encompasses all the ways our congregations, synods and ministries are helping the world around us know the love of God in Jesus.

[Click here to learn more.](#)

World Connections

Service, Advocacy, Ecumenism, Learning

Campus Ministry

MARCH MADNESS



SUPPORT YOUR CAMPUS MINISTRY

What is campus ministry madness?

Ministry Madness is a month-long digital friendraising event for ELCA Campus Ministry organizations held in March. It's an opportunity for campus ministries to work together to raise awareness about campus ministry and to connect campus ministry alumni and supporters to ministries in the organizations they



What can I do to support campus ministry?

From **Monday, March 2 to Tuesday, April 7**, support your team's campus ministry and help them earn points! Check back every Monday to see the standings! 100% of your donation will go to the Lutheran Campus Ministry site you choose to support!

Click **HERE**: <https://www.csis-elca.org/news/campus-ministry-madness-26/>



**“My soul yearns, even faints, for
the courts of the LORD.”
Psalm 84:2a**

Worship Support for March 2026

	March 1	March 8	March 15	March 22	March 29
Assisting Minister	Helen Repp	Kathy Bowersox	Eileen Herrstrom	Marlys Scarbrough	Dennis Archer
Reader	Meg Loven	Bob Dorsey	Nancy Marshall	Emily Dorsey	Jack Wilkie
Deacons	Art Traugott	Kathy Bowersox	Tina Fehrenbacher	Lois Wilken	Dan Lepp
Cantor	✎	✎	✎	✎	✎
Greeters	Carolyn Pater & Russ Dankert	Joe Meyer & Erika Bilger & Family	Bev Kieffer & Jim Fleming	Kathy & Van Bowersox	Erick & Meg Loven
Ushers	Brian & Amy Nicely	Jim & Kathy Eckstein	Doug & Karen Krusa	Bruce & Alicia Winter	Dave & Carol Larson
Livestreamer	Jim Anderson	Dave Brown	Kevin Vail	Jim Anderson	Michael Miller
Coffee Hour			Kathy & Van Bowersox		
Flowers	Lent	Lent	Lent	Lent	Palm Sunday
Dedication	✎	✎	✎	✎	✎

Grace Office Schedule

The Grace Lutheran Church office is open Monday—Friday from 9 a.m. to 2 p.m. Exceptions will be announced in GraceNotes or the monthly newsletter.

Pastor— Chris Repp

Office Assistant—Karen Maher

Director of Music—Nick Pierle

Organist—Mike Keeley

Council President—Marlys Scarbrough

Council Vice President—Van Bowersox

Council Treasurer—Debbie Peterson

Council Secretary—Kevin Vail

Council Members:

Dennis Archer

Dee Ehler

Tina Fehrenbacher

Gail Hug

Leanne Wichus

Alicia Winter

Committee Chairs:

Worship & Music—Ruth Anderson & Carolyn Pater

Finance Committee—Debbie Peterson

Parish Life Committee—Kathy Bowersox

Property Committee—Rotating Chairpersons

Social Ministry Committee—Lois Wilken

Chancel Flower Coordinators:

Gloria Rainer & Shirley Traugott

March 2026 Calendar

Sunday	Monday	Tuesday	Wednesday	Thursday	Friday	Saturday	
1 •9:30am Worship - In Person & Live Stream (S) •10:45am Property Committee (C) •11:00am Adult Sunday School (H) •12:00pm Women's AA (CH)	2 •1:00m Worship & Music Committee Meeting (P) •7:00pm Bell Choir Rehearsal (CL)	3 •4:30pm Executive Committee Meeting (P) •6:00pm Adult Children of Alcoholics and Dysfunctional Families (CH) •6:30pm Sweet Adelines (FH)	4 •6:00pm Lenten Soup Supper (FH) •Lenten Midweek Service (S) •7:30pm Choir Rehearsal (CL)	5 •10:00am Food Pantry (FH)	6	7	
8 Grace Food Pantry Sunday •9:30am Worship - In Person & Live Stream (S) •11:00am Adult Sunday School (H) •12:00pm Women's AA (CH)	9 •10:00am Food for Seniors (FH) •6:30pm Finance Committee Meeting (H) •7:00pm Bell Choir Rehearsal (CL)	10 •6:00am Food for Seniors (FH) •6:00pm Adult Children of Alcoholics and Dysfunctional Families (CH) •6:30pm Sweet Adelines (FH) •7:00pm Council (H)	11 •6:00pm Lenten Soup Supper (FH) •Lenten Midweek Service (S) •7:30pm Choir Rehearsal (CL)	12 •10:00am Food Pantry (FH) •6:00pm Game Night (N)	13	14	
15 •9:30am Worship - In Person & Live Stream (S) •11:00am Adult Sunday School (H) •12:00pm Women's AA (CH) •1:00pm Conference Assembly (S&N)	16 •7:00pm Bell Choir Rehearsal (CL)	17 •6:00pm Adult Children of Alcoholics and Dysfunctional Families (CH) •6:30pm Sweet Adelines (FH) •7:00pm Faith Circle (N)	18 •7:00am Food Pantry Truck Delivery (FH) •10:00am Comrades in Art (N) •6:00pm Lenten Soup Supper (FH) •Lenten Midweek Service (S) •7:30pm Choir Rehearsal (CL)	19 •10:00am Food Pantry (FH) •6:00pm Parish Life Committee (Zoom)	20 <i>Newsletter Copy Deadline</i>	21 •10:00am Choir Rehearsal for Joint Concert with Emmanuel Memorial (Emmanuel Memorial) •1:00pm Dada Bhagwan Vignan Institute (FH, N & K)	
22 World Hunger Sunday •9:30am Worship - In Person & Live Stream (S) •11:00am Adult Sunday School (H) •12:00pm Women's AA (CH)	23 •10:00am Food for Seniors (FH) •7:00pm Bell Choir Rehearsal (CL)	24 •6:00am Food for Seniors (FH) •6:00pm Adult Children of Alcoholics and Dysfunctional Families (CH) •6:30pm Sweet Adelines (FH) •Social Ministry Committee (N)	25 •6:00pm Lenten Soup Supper (FH) •7:00pm Lenten Midweek Service (S) •7:30pm Choir Rehearsal (CL)	26 •10:00am Food Pantry (FH) •6:00pm Game Night (N)	27	28 •10:00am Choir Rehearsal for Joint Concert with Episcopal Church (Emmanuel Memorial)	
29 Palm Sunday •9:30am Worship - In Person & Live Stream (S) •11:00am Adult Sunday School (H) •12:00pm Women's AA (CH) •2:00pm Rehearsal •3:00pm Joint Concert with Emmanuel Memorial (Emmanuel Memorial)	30 •7:00pm Bell Choir Rehearsal (CL)	31 •6:00pm Adult Children of Alcoholics and Dysfunctional Families (CH) •6:30pm Sweet Adelines (FH)				(S) Sanctuary (CL) Choir Loft (N) Narthex (K) Kitchenette (P) Pastor's Office	(CH) Chapel (H) Hoffmeister (CR) Class Rooms (N) Nursery (FH) Fellowship Hall